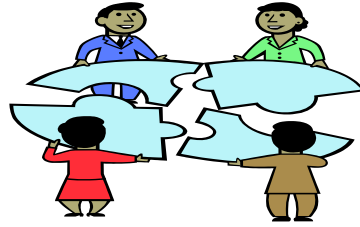


**United We Stand. . .
Putting the Pieces Together
(14th Annual Interpersonal Violence Conference)**



Featured Speaker

**Audace Garnett, BSN
Technology Safety Specialist
National Network to End Domestic Violence
Washington, D.C.**

Friday, October 12, 2018

**7:30 a.m. – 3:30 p.m.
Registration: 7:30 a.m.
Program: 8:30 a.m.**

Family Life Center

**First Presbyterian Church
393 East Main St.
Spartanburg, South Carolina 29302**

Sponsors

**Children’s Advocacy Center
First Presbyterian Church
SAFE Homes-Rape Crisis Coalition
7th Judicial Circuit Solicitor’s Office
South Carolina Legal Services
Spartanburg County Department of Social Services
Spartanburg County Domestic Violence Coordinating Council
Spartanburg City Police Department
Spartanburg County Sheriff’s Office
Spartanburg Regional Healthcare System Corporate Education**

ADA: If you need any of the auxiliary aids or services identified in the ADA to participate in this program, call SRHS Corporate Education at (864) 560-6746, by October 5. For additional comfort, please bring a sweater or jacket.



Spartanburg Regional Health Services District
Corporate Education
P. O. Box 4848
Spartanburg, SC 29305-4848

14th Annual Interpersonal Violence Conference

**Friday, October 12 2018
7:30 a.m. – 3:30 p.m.
Registration: 7:30 a.m.
Program: 8:30 a.m.**

Some conference materials may be available ONLINE
by September 28.

CONFERENCE MATERIALS are available
at <https://goo.gl/RrdQCP>

This link is CASE sensitive.

On-line registration
www.spartanburgregional.com/CEEvents
On-line registration Closes on September 28.

AGENDA (subject to change)

7:30am	Registration, Coffee, Exhibits, Networking	
8:30	Welcome, Announcements, Introduction	Jennifer Combs, MSN, RN, CPN, SANE-A, SANE-P
8:45	Keynote Presentation: Working with Survivors When Abusers Misuse Technology	Audace Garnett, BSN
9:45	Break, Refreshments, Exhibits, Networking	
9:55	Session I	
A.	Self-Defense vs Aggression	Jennifer Wells, JD
B.	Human Trafficking 101	Jesslyn Griffith, BA
C.	Trauma Informed Care... It does matter	Jennifer Parker, PhD, LPC Lynn McMillan, PhD, LISW-CP/S
D.	Creating Victim Friendly Courts	Tony Leibert, JD
E.	Teens and Technology, Pt. 1	Audace Garnett, BSN
F.	Sexual Assault-Whose Fault Is It? Pt. 1	Mike Prodan, BS
10:55	Break, Refreshments, Exhibits, Networking	
11:05	Session II	
A.	Home front Update	Barry Barnette, JD & Jennifer Wells, JD
B.	Judicial Ethics	Jim Bogle, JD
C.	Human Trafficking, Advanced	Jonathan Bastoni, MA
D.	Brain Changes from Trauma	Denise Levereaux, MSW, LISW-CP
E.	Teens and Technology, Pt. 2	Audace Garnett, BSN
F.	Sexual Assault-Whose Fault Is It? Pt. 2	Mike Prodan, BS
12:05	Lunch (provided), Door prizes	
1:05	Session III	
A.	Orders of Protection vs Restraining Orders	Jennifer Wells, JD
B.	Recognizing Signs & Symptoms of Elder Abuse, Neglect and Exploitation	Jessica Winters, BA, CDP
C.	Trauma Informed Interviewing	Dean Kilpatrick, PhD
D.	Ask about Suicide to Save a Life	Alex Karydi, PhD, LMFT, CAC
E.	On-line Dating & Gaming: Knowing Risks & Staying Safe, Part 1	Audace Garnett, BSN
F.	Obsessive Love: Jealousy to Murder, Pt. 1	Mike Prodan, BS
2:05	Break, Refreshments, Exhibits, Networking	
2:15	Session IV	
A.	Family vs Criminal Court	Jennifer Wells, JD
B.	Overview/Updates on SANE Kit	Jennifer Combs, MSN, RN, CPN, SANE-A, SANE-P
C.	Back to the Basics: How the Children’s Advocacy Center (CAC) Model Can Help Support the Investigative Process	Nancy Henderson MD, Tabitha Weber, MSW, LISW-CP, Emily Miller, MSW, LISW-CP
D.	Bystander Intervention	Jamie Hughes, BS
E.	On-line Dating & Gaming: Knowing Risks & Staying Safe, Part 2	Audace Garnett, BSN
F.	Obsessive Love: Jealousy to Murder, Pt. 2	Mike Prodan, BS
3:15	Q/A, Wrap-up, Evaluation	
3:30	Adjourn	

The speakers and advisory committee for this conference have declared no conflict of interest. CE approval does not imply endorsement of any product.

PROGRAM DESCRIPTION

This one-day event will help service providers to expand their knowledge and have a better understanding of the dynamics of interpersonal violence. Our goal is to provide quality, local training on family violence issues for participants from the Upstate target population. Ultimately, the desired outcome would be to increase victim safety and offender accountability. We would like to reduce the number of domestic violence, child abuse, and sexual assault/abuse victims in our community through increased collaboration, understanding and communication between those organizations that assist victims. In addition, there will be exhibits from organizations, vendors of interest, etc., and the opportunity of networking with other service providers.

LEARNING OUTCOMES

Upon completion of the program, the participant will be able: (In reference to Interpersonal Violence)

- Describe how to be an advocate in the prevention, recognition, assessment and management
- Apply best practices and protocols in the management of interpersonal violence

TARGET AUDIENCE

Nurses (Emergency Department, Women and Children Health Services, Healthcare Management and School Nurses), Social Workers, Therapists, EMS, Physicians, LEO, Judges, Attorneys, Social Services, Ministers and Legal Personnel
Agencies: DHEC, DSS, Mental Health, Alcohol & Drug Abuse, Schools, and Colleges

CONTINUING EDUCATION CREDITS

You must attend 90% of each educational offering and breakout session to receive CE credit. No partial credit will be given.

Nurses: This educational activity has been awarded **5.25** contact hours. Spartanburg Regional Corporate Education is an approved provider of continuing education by the SCNA, an accredited approver with distinction, by the American Nurses Credentialing Center’s Commission on Accreditation.

Social Workers: This program has been approved for **5.25** hours of continuing education by Spartanburg Regional Corporate Education under its accreditation by the SC Board of Social Work Examiners.

Counselors/Therapists: This program has been approved for **5.25** hours of continuing education by Spartanburg Regional Corporate Education under its accreditation by the state of SC Board of Examiners for Licensed Professional Counselors, Marital and Family Therapists, and Psychological Educational Specialists.

Others: This program provides **5.25** hours of continuing education.

CE has been applied for: Law Enforcement Officers, Judges, Attorneys, VSPs

REGISTRATION INFORMATION

Fee includes on-line conference materials, refreshments, lunch and on-line CE certificate. Deadline for registration is September 28, 2018. No refunds but substitutions are accepted.

You may call (864) 560-6282 to confirm your registration.

Content Information: Marlene Evans or Jennifer O’Shields at (864) 583-9803.
Registration/Directions: Angie Cothran at 864 560 6282 or ascotran@srhs.com

LOCATION

Family Life Center, First Presbyterian Church, 393 East Main St., Spartanburg, SC 29302

DIRECTIONS

From Greenville: I-85N to exit 69 (I-85 Business North), take exit 5A (585, 176, Pine Street), Go 3.5 miles on Pine Street. Chamber of Commerce building, with flags on the right. Get in right lane. Turn on to Main Street. Get in Left lane. Go one block and turn left on to Chestnut Street. First Presbyterian Church is on the corner of Chestnut and Main street. The Family Life Center will be on your left-hand side, pass the church towards Kennedy Street.

From Charlotte on I-85 South: Keep right to continue I85 BUS S, follow signs for I 85/Spartanburg Freeway Loop. Take exit 5A for - 585 BUS S/US 176E/N. Pine ST. – follow above directions.

From I-26 (east from Asheville or west from Columbia): Take exit 19B to Business 85 going north. Take exit 5A for - 585 BUS S/US 176E/N. Pine ST. – follow above directions.

SPEAKERS/PRESENTERS

Keynote Speaker National Network to End Domestic Violence (NNEDV) <u>Audace Garnett, BSN</u> Technology Safety Specialist Washington, D.C.	Greenville Hospital System <u>Nancy Henderson, MD</u> Director, Division Forensic Pediatric Greenville, SC	Spartanburg Regional Healthcare System <u>Jennifer Combs, MSN, RN, CPN, SANE-A, SANE-P;</u> Forensic Nursing Coordinator Spartanburg, SC
Children’s Advocacy Center: Spartanburg, Cherokee, Union <u>Tabitha Weber, MSW, LISW-CP;</u> Clinical Director & Forensic Supervisor <u>Emily Miller, MSW, LISW-CP;</u> Victim & Family Advocacy Coordinator Spartanburg, SC	7th Judicial Circuit Solicitor’s Office <u>Barry Barnette, JD</u> Solicitor <u>Jennifer Wells, JD</u> Asst. Solicitor <u>Tony Leibert, JD</u> Asst. Solicitor Spartanburg, SC	University of SC Upstate <u>Jennifer Parker, PhD, LPC</u> Director of Child Advocacy & Professor of Psychology <u>Lynn McMillan, PhD, LISW-CP/S,</u> Director & Senior Instructor, Child Advocacy Studies Spartanburg, SC
Medical University of SC <u>Dean Kilpatrick, PhD</u> University Professor of Clinical Psychology Department of Psychiatry & Behavioral Science Charleston, SC	SC Attorney General’s Office <u>James Bogle, JD</u> Senior Asst. Attorney General Columbia, SC	SC Youth Suicide Prevention Intervention <u>Alex Karydi, PhD, LMFT, CAC</u> Program Director Columbia, SC
Trauma & Stress Management <u>Denise Levereaux, MSW, LISW-CP</u> Private Practice Spartanburg, SC	Safe Homes Rape Crisis Coalition <u>Jamie Hughes, BS</u> College Outreach Director Spartanburg, SC	Greenville County Sheriff’s Office <u>John Bastoni, MA</u> Human Trafficking Investigator Greenville, SC
SC Appalachian Council of Governments <u>Jessica Winters, BA, CDP</u> Regional Long Term Care Ombudsman Greenville, SC	SWITCH <u>Jesslyn Griffith</u> Community Engagement Coordinator Greenville, SC	SLED <u>Michael Prodan, BS</u> Captain SAC Behavioral Unit Columbia, SC

Registration Form
14TH Annual Interpersonal Violence Conference
Friday, October 12, 2018

Please print clearly. One name per form

Nurse SW LPC EMS Minister/Chaplain VSP Physician
 Judge Attorney Law Enforcement Officer Other _____

Name: _____

Mailing Address: _____

City / State / Zip: _____

Employer: _____

(Please **PRINT** Legibly)

Email address: _____

Daytime Telephone: _____

Special Needs (specify): _____

NOTE: Session selection will be made on the day of the event

On-line registration: www.spartanburgregional.com/CEEvents

On-line registration Closes on September 28.

REGISTRATION FEES: Please mark the correct fee.

\$100.00

\$50.00 For Undergraduate, Full-time students

\$25.00 Additional fee after September 28

Limited numbers of scholarships are available.

Please contact Marlene Evans at (864) 583-9803 for more information.

PAYMENT METHOD:

A. Check - amount enclosed: \$ _____

B. State/ Agency Voucher \$ _____

C. Visa MasterCard Discover AMEX \$ _____

Account #: _____

Security Code _____ Expiration Date _____

Billing Address _____

Signature _____

We cannot accept registrations without payment or guarantee of payment.

PLEASE MAKE CHECK PAYABLE TO: Spartanburg Regional

and mail with completed registration to:

SRHS Corporate Education

PO Box 4848

Spartanburg, SC 29305-4848

For Credit card payment: FAX Completed registration form to (864) 560-7440